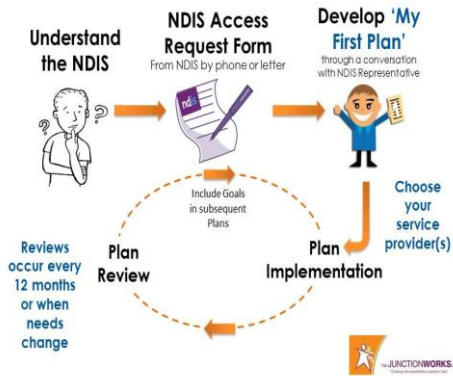


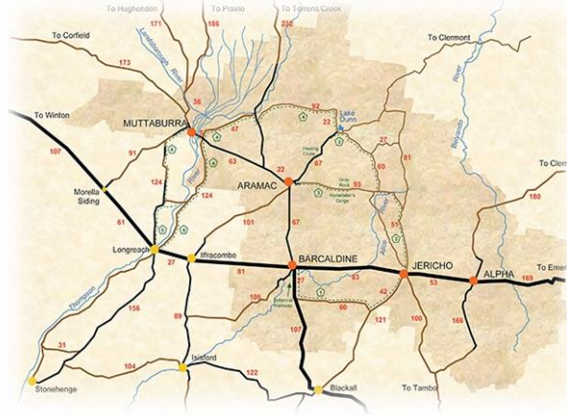
## Participant's NDIS Pathway



1800 800 110



**Yes!**  
we are a  
registered provider



## Area of NDIS Supports

## Local Area Contacts for NDIS Services

### Barcaldine Regional Council

Carl O'Neill

Senior Community Care Services  
Coordinator

PO Box 191

Barcaldine Q 4725

Ph: 07 4651 2187 or 0408 372 526

### NDIS Local Area Coordinator

Chris Kelso

0436 674 312



CPCMCMSA

Certified Practitioner with the  
Case Management Society of  
Australia & New Zealand (CMSA)  
[www.cmsa.org.au](http://www.cmsa.org.au)



# NDIS Support for YOU

what does it  
**MEAN** to ME?



**ndis** National Disability  
Insurance Scheme

Registered provider

## Catalogue of NDIS Supports

The are three areas your plan can cover;

1. Core Activities,
2. Capital, and
3. Capacity Building.



The NDIS is about YOU!



You are at the centre of the services we provide you. Ultimately, you choose, with our guidance, and your plan, to best suit your needs.

## CORE SUPPORTS



### Daily Tasks

1. Assistance with daily life
  - Household decision making,
  - Personal Care,
  - Domestic tasks,
  - Meals on Wheels,
  - Assistance and/or supervising tasks of daily life
2. Transport
  - Within community to events, recreational or vocational purposes
3. Consumables
  - Items to support you and your health needs

### Social & Community Participation



4. Increased social & community participation
  - Recreation, peer support, community access and life choices
  - Group/Centre Activities

**We can assist you to manage your plan so you achieve the best possible outcomes**

## CAPITAL SUPPORTS



### Assistive Technology

5. Assistive equipment for recreation, household tasks, personal care and safety.

### Home Modifications

6. Stair climber, grabrails, bathroom, toilet, kitchen, laundry, access

## CAPACITY BUILDING



### 7. Assist-Life Stage, Transition

### 8. Plan Management

### 9. Choice & Control

### 10. Health & Wellbeing

### 11. Relationships

### 12. Lifelong Learning

- Some of these supports may be referred through Plan Management to other NDIS Providers

